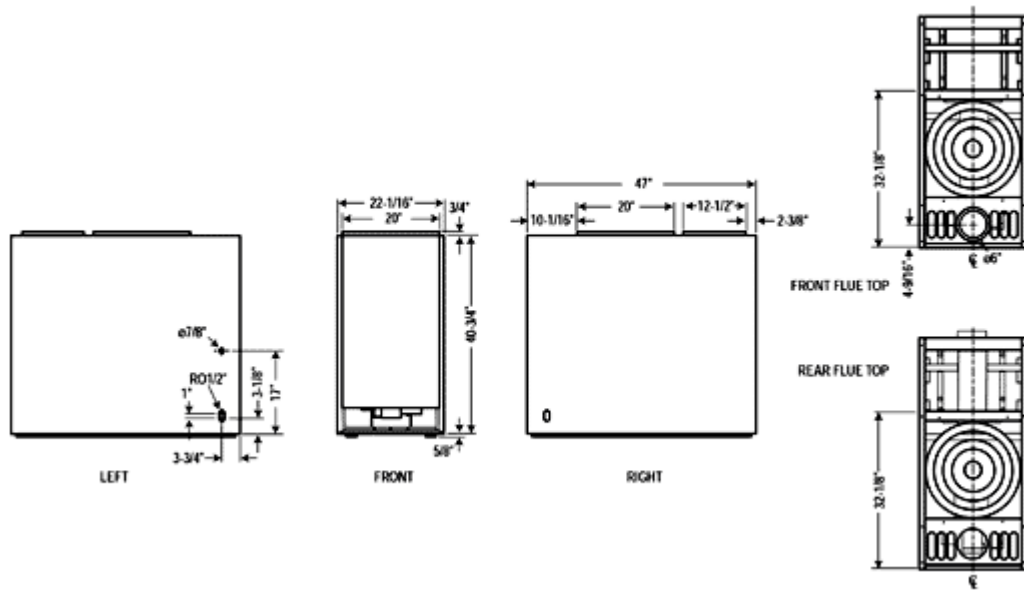


LO BOY SPECIFICATIONS



Model No.	BTU Input	Heating Capacity BTU/HR	AFUE	Blower Performance CFM @ 0.5 w.c. Direct Drive	Nozzle G.P.H.	Nozzle Type (Delavan)	No. & Size of Filters	Ship Wt.
CLBF 68-112 Front Flue	84,000	69,700	81.0	930 - 1,420	0.60	.60x80° A	(2) 10x20	315
	105,000	87,100	81.0	930 - 1,420	0.75	.75x80° A	(2) 10x20	315
	119,000	98,700	81.0	930 - 1,420	0.85	.85x80° A	(2) 10x20	315
	140,000	116,200	81.0	930 - 1,420	1.00	1.00x80° A	(2) 10x20	315
CLBR 68-112 Rear Flue	84,000	69,700	81.0	990 - 1,420	0.60	.60x80° A	(2) 10x20	315
	105,000	88,200	81.0	990 - 1,420	0.75	.75x80° A	(2) 10x20	315
	119,000	98,700	81.0	990 - 1,420	0.85	.85x80° A	(2) 10x20	315
	140,000	116,200	81.0	990 - 1,420	1.00	1.00x80° A	(2) 10x20	315

Models CLBF 68-112 and CLBR 68-112 are factory set for 105,000 BTU/HR input (.75 GPH).
All other sizes require a change of nozzle in the Field.

Specifications are subject to change without notice.